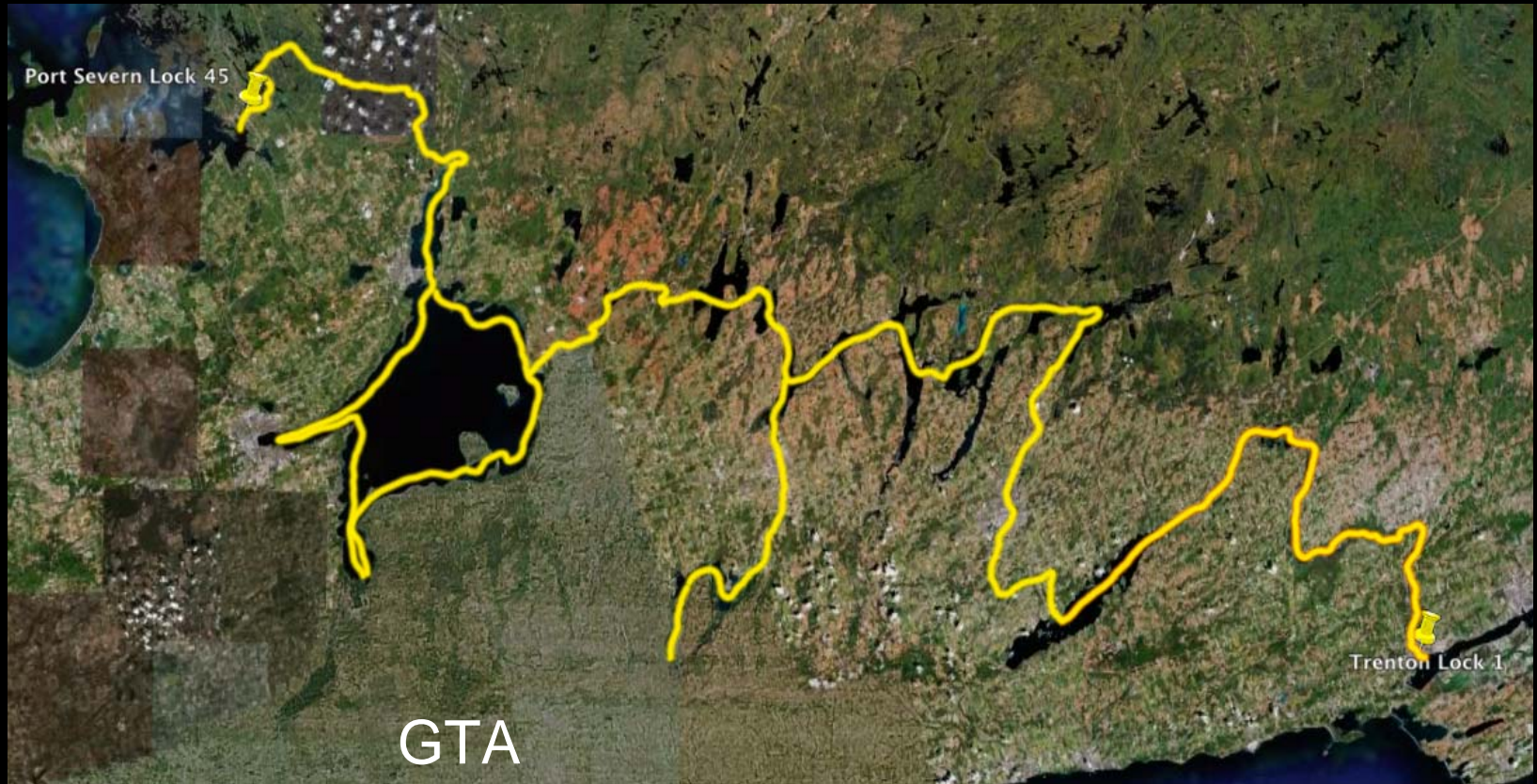


Trent Severn Waterway Panel Meeting

Presentation by Bill Goulding
President - Fenelon Falls &
District Chamber of Commerce

What is This Thing?



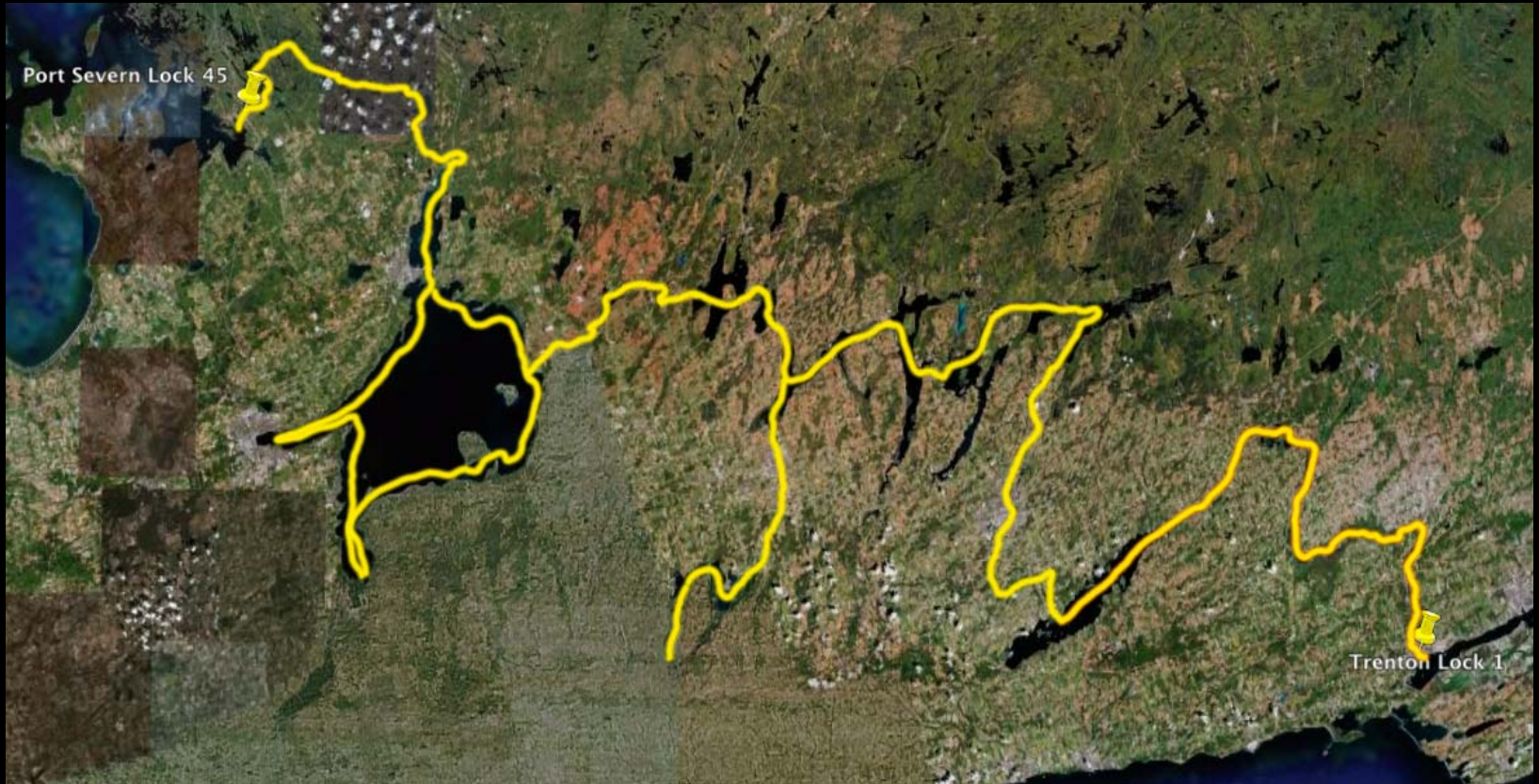
Dividing the Trent-Severn

- Different Areas Along the Trent-Severn Lend Themselves to Different Activities and Behaviors
- Leverage Each Section's Qualities to Reach it's Maximum Potential
 - Create Plan to Nurture Community and Idea Growth

What Makes a Section?

- Proximity to Major Centres and Amenities
- Established User Patterns
- User Experience
- Geography

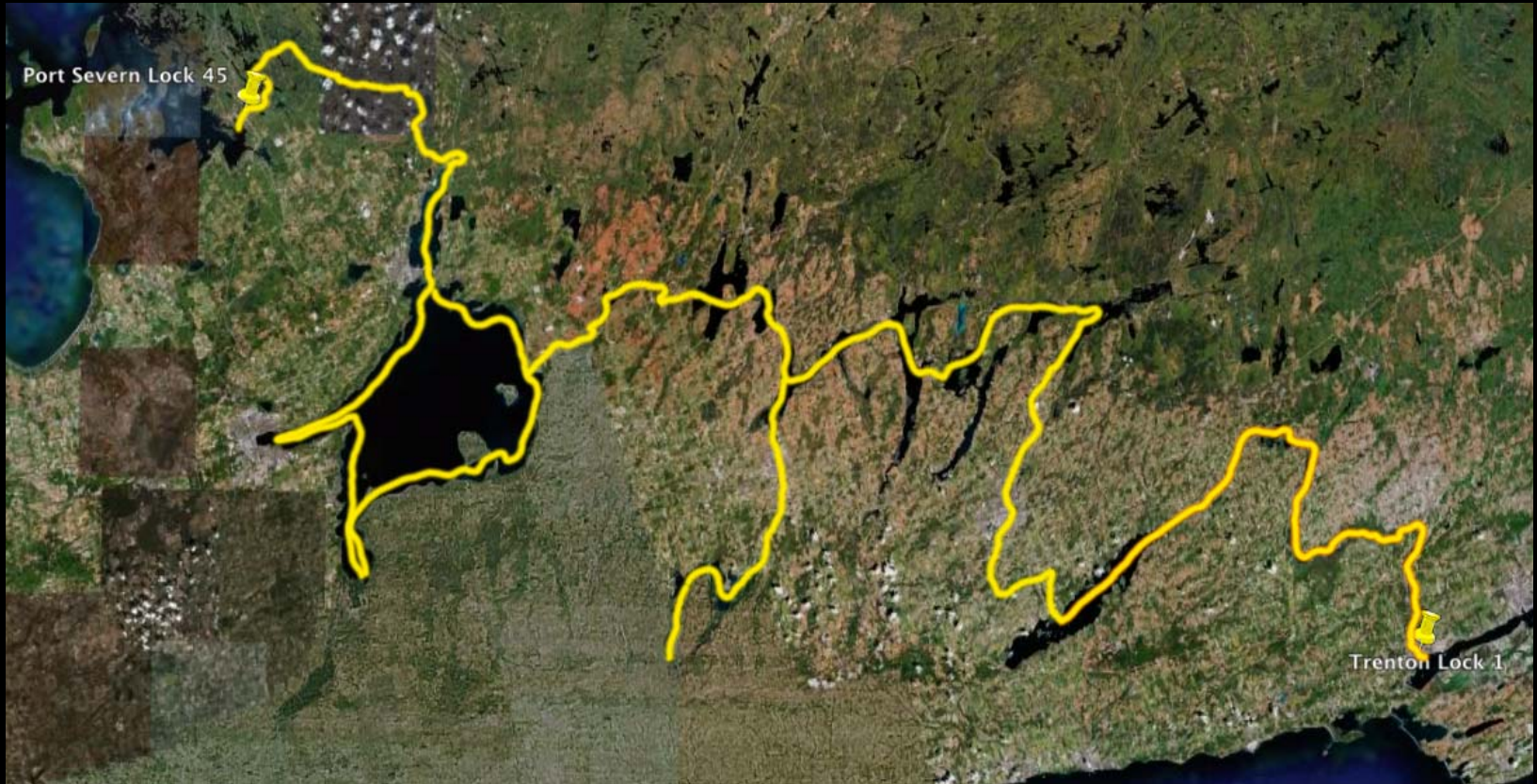
Section 1 - Lock 1-19



Section 1 - Lock 1-19



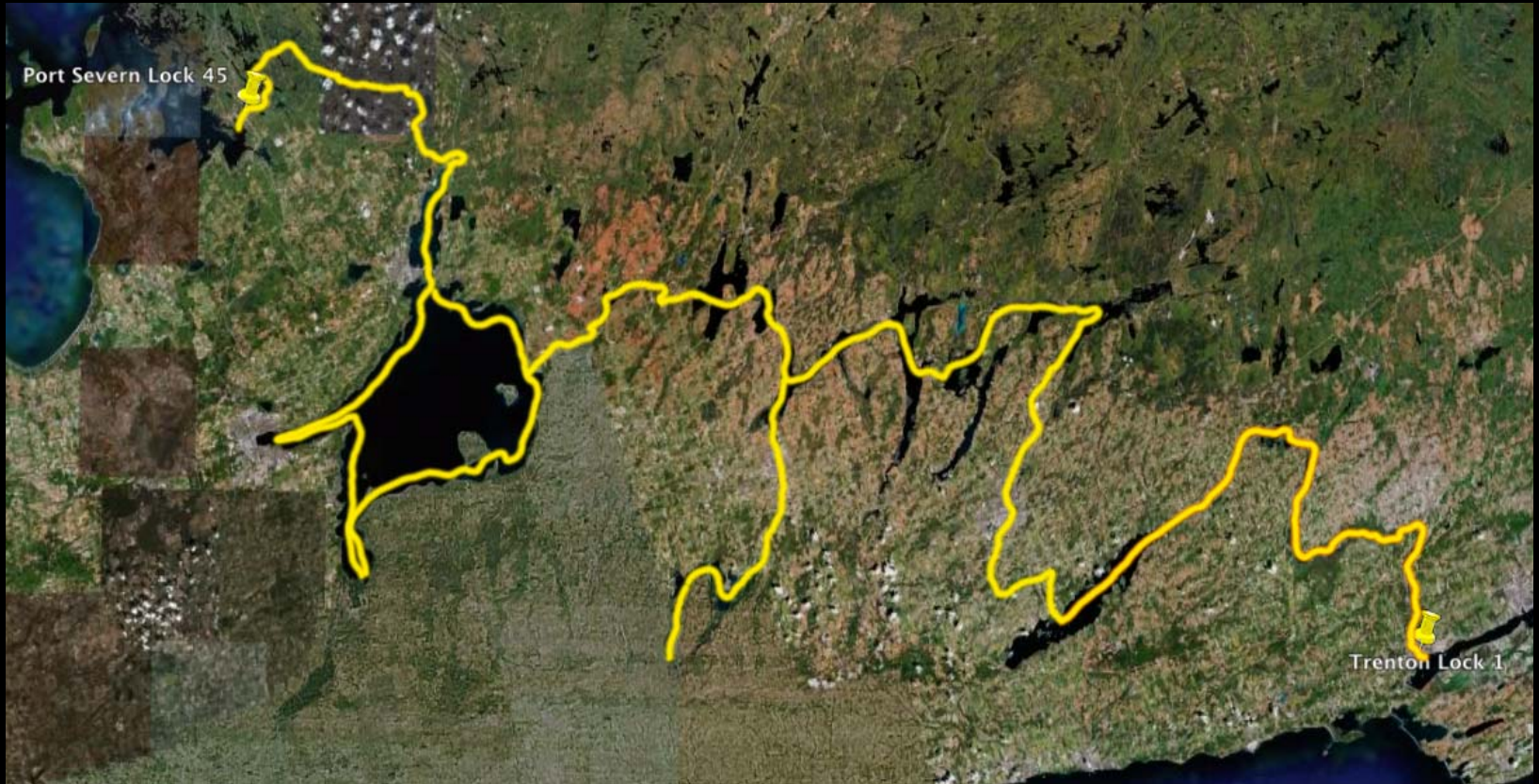
Section 2 - Lock 20-31



Section 2 - Lock 20-31

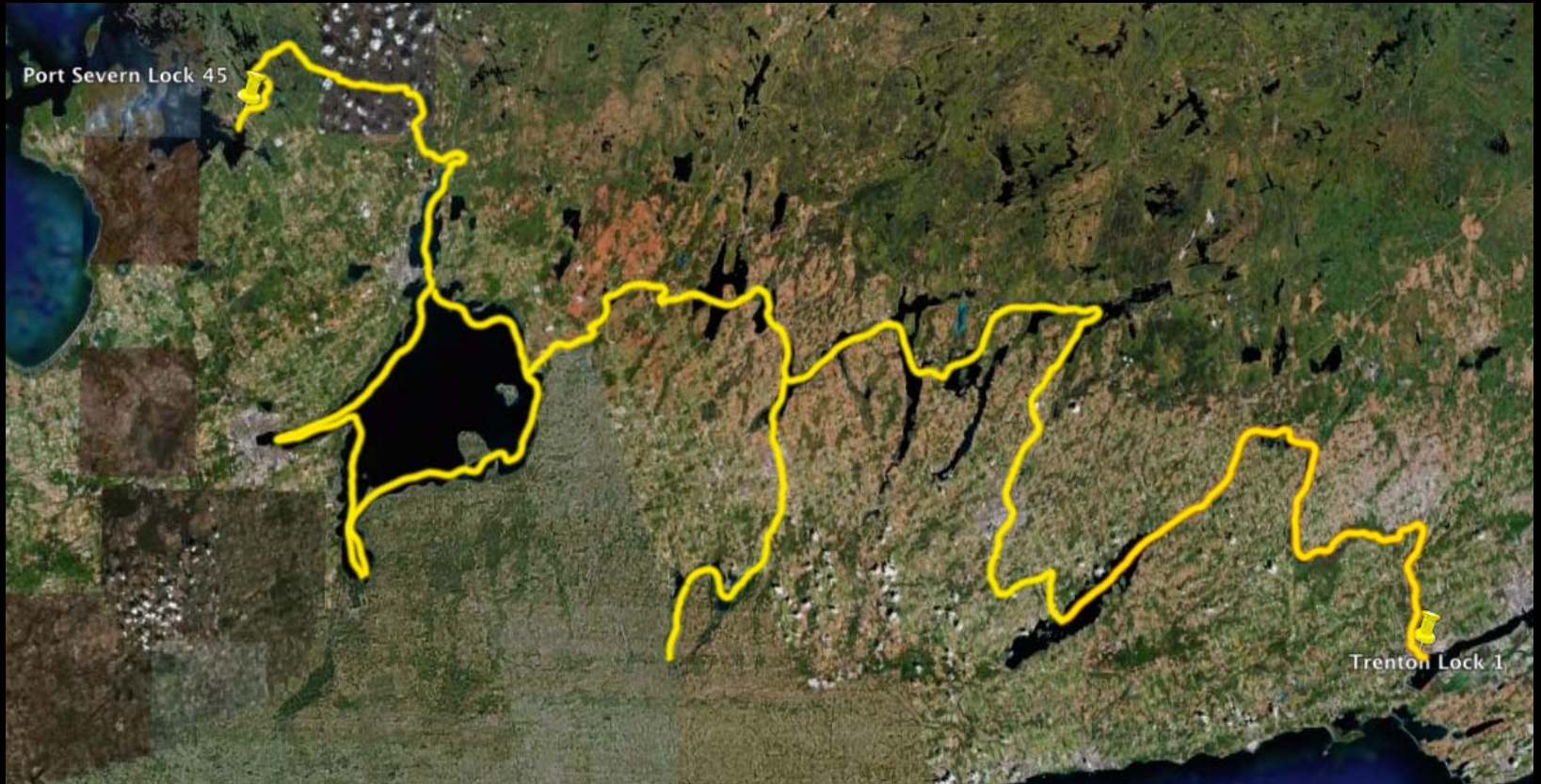


Section 3 - Lock 32-35



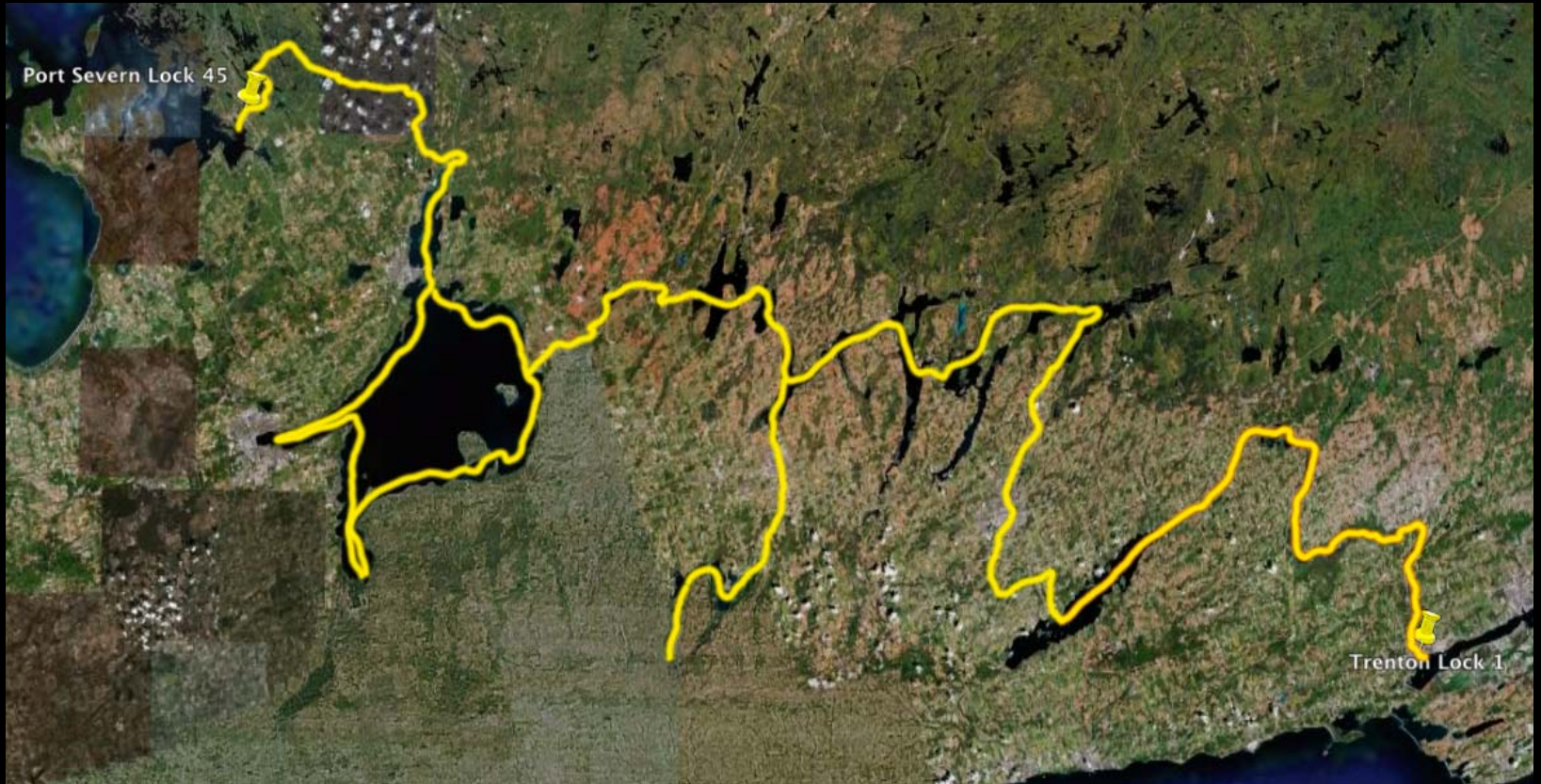
Section 3 - Lock 32-35

Section 4 - Lock 36-41



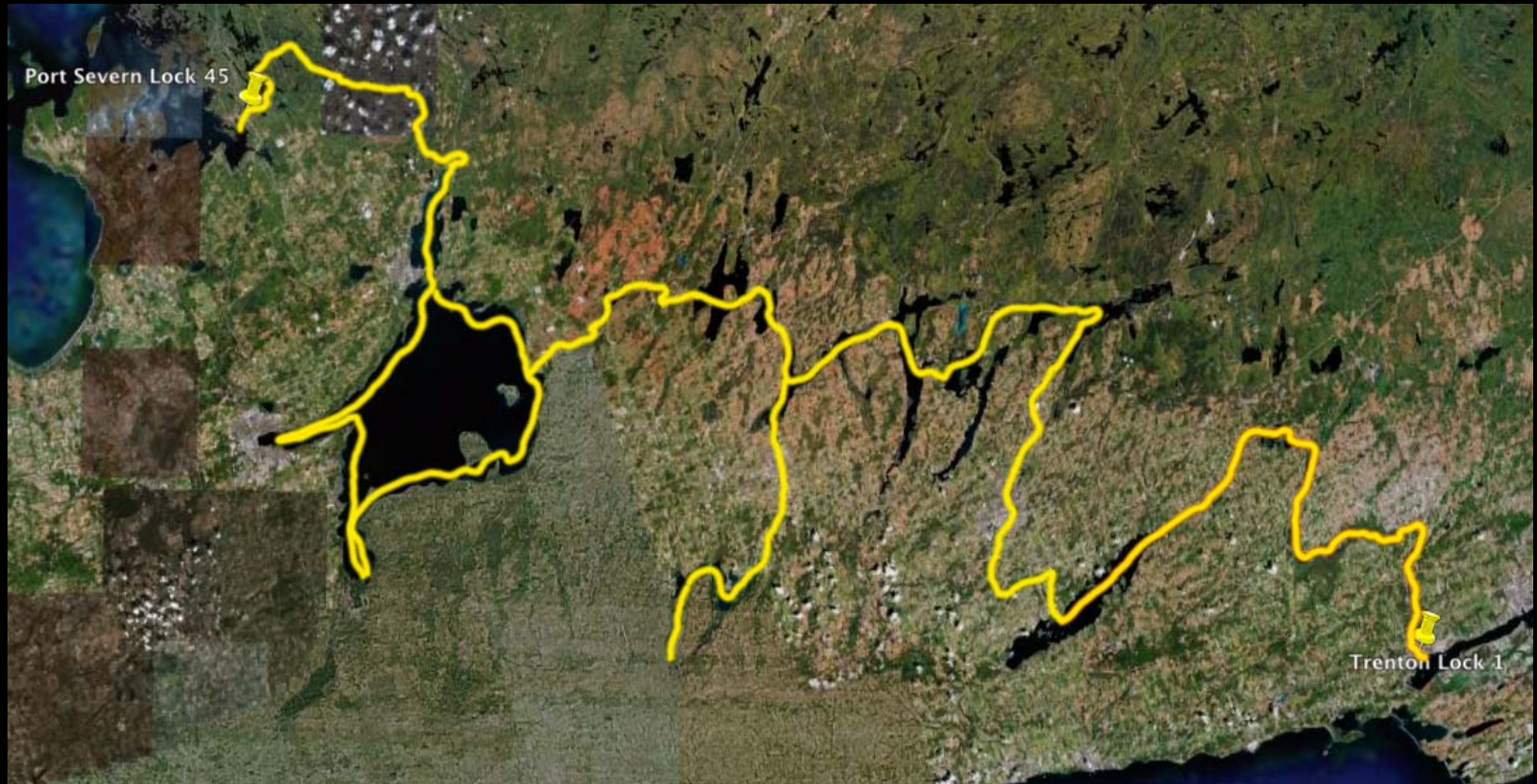
Section 4 - Lock 36-41

Section 5 - Simcoe & Couchiching



Section 5 - Simcoe & Couchiching

Section 7 - Locks 42 - 45



Section 7 - Locks 42 - 45



How Fenelon Falls Fits

- We're Remarkable

What is Remarkable?

- Something that is Able to be Remarked Upon
- Remarkable Things are Crucial - they Spread the Idea
- Focus on the Remarkable

What Can We Offer?

- Remarkable Experiences:
 - Novelty
 - Attractions
 - History
 - Community
 - Service
 - Fun

How Fenelon Falls Fits

- We're in The Middle of it All

How Fenelon Falls Fits

- The Visitors are Already Here

How Fenelon Falls Fits

- The Geography is Right

How Fenelon Falls Fits

- There is Opportunity for Development

How Fenelon Falls Fits

- We're Remarkable
- The Idea Can Spread From Here