



Haliburton Highlands CHAMBER *of* COMMERCE

The Panel on the Future of the Trent Severn Waterway:
185 King Street, Suite 100
Peterborough, ON
K9J 2R8

Tuesday, August 14, 2007

Mr. Chairman and Members of the Panel:

My name is Eric Christensen, co-owner of Buttermilk Falls Resort and Past President of the Haliburton Highlands Chamber of Commerce. Thank you for allowing me to present the combined concerns of the 330 member businesses of the Haliburton Highlands Chamber of Commerce.

The Haliburton Highlands Chamber of Commerce, through its leadership, is committed to continuously promote and foster the business climate and enhance the quality of life in our community.

As a member-based business advocacy organization we are dedicated to providing a strong voice in support of the economic vitality of our community.

To prepare for today, we sent an email to all of our members (See attachment #1) asking for their input in regards to the water level management in Haliburton County. We then compiled their responses, grouped them into categories, assessed some of their concerns and prepared the following report. We then sent the compiled report back to our members to confirm their agreement with the presentation. (See attachment #2) Not one of our businesses responded negatively to our report. I would like to present that to you now.



Haliburton Highlands CHAMBER *of* COMMERCE

Trent Severn Waterway Panel Presentation

The Haliburton Highlands Chamber of Commerce recently polled our members asking for their input regarding the water levels in Haliburton County.

We asked:

1. How has the changing water levels affected your business? (Directly, indirectly or not at all)
2. Have you noticed an increase or decrease in natural habitats and resources as a result of the water levels in Haliburton?
3. Have you heard complaints, and can you list a few?
4. Have you heard positive comments in regards to the water control in Haliburton County? Can you list a few?
5. Do you have a story to share with us that would help better understand the effect the water levels have on you as a resident of Haliburton County?
6. Do you have a personal story you can share with us that would help better understand the affect the water levels have on you as a business owner in Haliburton County?

We received many replies with various answers to these questions. Mostly the businesses in Haliburton County feel that they have been directly affected by the inconsistent water levels in our lakes and rivers. In return this has hurt some of our business financially. Others have gained financially from this. We have broken down the comments from the various business sectors in Haliburton County.

Real Estate:

- "Many complaints from waterfront owners & vacationers & prospective buyers of waterfront properties"
- "Why are we being charged higher taxes for waterfront property?"
- "Although my waterfront home is listed with for sale with you, please do not show it when the water level is low, it is a waste of time & money"
- "Please phone my office every day & let us know if the waterfront level is suitable for showings"
- "Haliburton County Residents are loosing income from real estate sales due to inconsistent waterfront levels."



Haliburton Highlands CHAMBER *of* COMMERCE

Cottage Rental

- "I have had to refund rental fees to fishermen and boating enthusiasts when their boats were stuck in the mud, without any water to enable them to float from my shore. It took me many hours to clean up the damages they did to my muddy shore and floors of my cottage"
- "I have had to refund rental fees because the cottage was not as advertised a week prior"
- "Renters have complained that they cannot swim anymore at the cottage because of the e. coli levels in the water left by the Geese"
- "Even though I mention the Trent Severn Waterway drawdown on my advertising, I have lost income when prospective renters see the waterfront either too high or too low when they arrive."
- "Swimming isn't nice at the cottage anymore due to the increased weed growth. Renters either want a full refund or partial and only stay a day or two"

Media

- "Our business success is based solely on the success of local business. If it hurts in any way for any reason, we are directly impacted - people don't advertise if they are not doing well."
- "We hear complaints all the time when we are visiting customers. We are getting tired of the standard response "I guess they have to do that in order to keep the water levels controlled"

Retail

- "I have noticed a decrease in sales come mid week when cottagers have either left town early or decided not to come at all once they have no water at the front of their cottage"

We asked for personal experiences and received the following comments:

"When we lived in Wilberforce we would see people "walking" their boats from one lake to another by August when just a week prior, everyone was boating to the lake. Then we moved to Soyers Lake area, purchased a boat, dock it at a neighbours with permission and come late August, early September, our boat magically ends up on dry land overnight. Try moving a huge pontoon boat off soggy marshy yucky land."

"The pleasure once enjoyed boating on our lake is now marred by concerns of finding dangerous once hidden obstacles in the water. Once the water levels drop, we cannot fully enjoy our lake for fear of damaging our boat or sustaining injury."



Haliburton Highlands CHAMBER *of* COMMERCE

"We wish there was a way of notifying people when the logs are coming out of the local dams. This would allow us time to adjust to the water levels."

"In the past 30 years, Loons have attempted to nest on the banks of our lake. They were successful once. Last year the water rose so high the egg(s) were covered despite the loons attempt to elevate the nest. This year, the water level was so low that they were unable to navigate across the open beach to establish a nest."

"This year boating on this lake had to be delayed for some period of time. In our case, the waters did not even come up to the dock until late June (the water was about 20 feet or more away from the dock). When it finally did rise we adjusted the dock to the high levels from the previous year. A week or so later, we then found ourselves attempting to raise the dock sufficiently to prevent it floating away, dock, boat and all. We noticed that many of our neighbours also delayed their docks until quite late in the summer.

In early August as levels drastically fell, we were then forced to move the boats away from the docks and out in the lake, attached to some form of anchor. This means that boating was not possible (unless all were prepared to wade out and try to clamber into the boats, no mean feat in itself)."

We also asked if there was an effect on wildlife, natural habitats, and resources. The following comments were received:

- "There is an odour from the water when levels are low"
- "How can our young wildlife survive these fluctuating water levels?"
- "The Canadian Geese have better access to my lawn and leave their dropping and a fowl odour when the water levels are high"
- "Many of our beaches are closed at times during the hot weather due to e. coli levels"
- "Natural Fish habitats in the area are being reduced or destroyed due to shallow lake levels and then rapidly increased levels."
- "My shoreline has taken a beating this year. We have seen tremendous erosion and we are getting concerned"
- "I have seen sections of the shoreline 50' long and 10' to 20' wide, on Drag Lake, break off and collapse into the lake taking full grown trees and everything else with it due to high water undermining the banks."



Haliburton Highlands CHAMBER *of* COMMERCE

- "Muskie, Clams and Bass need the vegetation along the waters edge to successfully continue their existence. This year the water dropped so low for so long their nests were exposed and destroyed. This concerns me for next year."

We asked for positive comments and received the following:

- "This year was great. We got a permit to do some shoreline restoration and it was easier with the water 3 feet lower than normal"
- " I have seen an increase in business thanks to the fact that parents are looking for something to do when the kids can no longer swim or boat. This is not the way I want to increase my business as these people are not happy cottagers, but rather frustrated parents who will probably not be back"

The residents and businesses of Haliburton County have grown to accept late fall drawn down as just part of the environment. The general consensus is that the fluctuating levels during the summer have adversely affected the residential and business community. We understand the importance of the Trent Waterway system to all the communities south of us. However we are asking for some consideration when it comes to planning. Our dams are in major need of repair, our lakes and natural fish habitats are being destroyed and we are now losing income from the fluctuating water levels.

On behalf of 330 Business owners (listed below) in Haliburton County we are asking that these levels be better managed to help us protect our way of living.

West Guilford Shopping Centre
Red Umbrella Inn
Ogopogo Resort
Petrini Construction
Haliburton IGA
Rail's End Gallery
South Wind Motel
Buttermilk Falls Resort
County Sign & Display
Haliburton Home Hardware
Photo Solutions Foto Source
Minden Electric
Royal Lepage Lakes of Haliburton Brokerage
Kosy Komer Restaurant
Haliburton County Studio Tour
Haliburton County Snowmobile Association
Beaverbrook Golf Course Ltd.
Cottage-Resort.com
YMCA Wanakita

Whitfield Plumbing & Heating
The Minden Times
Twin Rocks Resort
Ridgewood Ford Sales Limited
Dr. Trevor's Kash Cottage
May Mortgage Services
Kinsman's Cottages
Herwood's Variety
Haliburton Lumber & Enterprises Ltd
Tabbed Tape-Strip Corp
Northern Eagle Campers Assoc.
Wild Swan B & B Inn
Kawartha Dairy
Hunter Creek Inn
Halcom Communications
Kinark Outdoor Centre
The Benefits Coach
Point in Time Centre for Children, Youth & Parents
Wagon Wheel Motel & Restaurant



Haliburton Highlands CHAMBER *of* COMMERCE

Rexall PharmX Drug Stores Ltd.
Tom Prentice & Sons Trucking
Wigamog Inn Resort
The Co-operators
G.J. Burtch Construction Ltd.
Haliburton County Echo/Algonquin Graphics Ltd.
Thurston Professional Corporation
Axis Village Court Pharmacy
Haliburton County Home Builders Association
Sir Sam's Inn
Riverside B & B
Miners' Bay Lodge Ltd.
Kushog Korners Cottages
Haliburton County Development Corporation
Bonnie View Inn
Swiss Acres B & B
Homestead Cottage Resort
ABECK Accounting, Tax & Computer Service
Haliburton Highlands Golf Course
Dawson Insurance Brokers Ltd.
Haliburton Forest & Wild Life Reserve.
TD Canada Trust
Noble Motel & Restaurant
M. H. Poleline Construction Ltd.
Kinsmen Club of Minden
Jay Lake Campground & R.V. Park
Carriage House Custom Designs (Canada) Ltd.
County Commercial Printers
DenSign Inc.
Bowes & Cocks Limited
Pinckard Wyjad Fleming Associates
Prentice Power Sports Ltd.
Sir Sam's Ski Area
Old Mill Marina (Kawagama)Ltd.
Northern Timberhouse Ltd.
Township of Dysart et al
Mill Valley Natural Spring Water
Minden Home Hardware
Minden House B & B
Lakeside Golf Course
Canadian Imperial Bank of Commerce
Antiques & Neat Stuff
Silver Birches Cottages and Camping
Pole Position Kartways
Private Cottage Rental
Dominion Hotel
CENTURY 21 Granite Realty Group Inc.
Bishop & Rogers Barrister & Solicitor
Francis Thomas Contracting Co. Ltd.
The Pump Shop

Shalom By The Lake
Pine Spring Valley Resort
Halimar Resort
Haliburton Family Medical Centre
Dollo's IGA
McKee Security & Telephone Systems
Township of Minden Hills
Stouffer Mill B & B Getaway
Whitewater Ontario
Dawson Gray Chartered Accountants
Patient News Publishing
Minden Pharmasave
Minden Animal Hospital
Master's Book Store
Kilcoo Camp Limited
Driver's Edge Driver Training
Central Office & Art Supplies/H&R Block
Bark Lake Leadership & Conference Centre
Willow Beach Cottages
Martinwood Resort and Golf Course
Stedmans V&S Department Store - Minden
Sunny Rock B & B
Fleming College
Little Hawk Resort & Marina
Heather Lodge
The Ethel Curry Gallery
Walker's Heating & Cooling Systems
Stedmans V&S Department Store - Haliburton
Express Radiant Inc
Kinmount House B & B
Oakview Lodge and Marina
Dundee Private Investors Inc.
J.A.C. Kernohan Construction Ltd.
Dyna-Con Explosives Technologies
Beeby Management Resources
Iroindale Business Center
Haliburton County Community Co-operative Inc.
Bank of Montreal
Delta Pinestone Resort
Molou Theatre - Haliburton
Ontario Parks - Algonquin Provincial Park
County of Haliburton
Kashaga Lodge
Mark Walker Trucking
Dr. Benoit
Haliburton Hockey Haven
Paudash Trail Blazers Snowmobile Club
Re/Max Haliburton Highlands Realty Ltd. - Hal.
Raymond G. Selbie B.A. L.L.B.
Township of Algonquin Highlands



Haliburton Highlands CHAMBER *of* COMMERCE

Blairhampton Golf Club
Curry Motors Ltd.
Domain of Killien
Re/Max Haliburton Highlands Realty Ltd.
Performance Printing Specialty Publications
South Algonquin Trails Inc.
Bancroft & District Chamber of Commerce
Collins Barrow Kawarthas LLP
Muskoka & Haliburton Assoc. of Realtors
Mountain Trout House Marina Ltd.
Wedgewood Marina
Haliburton Broadcasting Group
Government Information Centre
Land Eng. Associates Ltd, o/a Drag Lake Lodge
Del Sharp Electric Limited
Algonquin Projects Ltd.
Bobcaygeon Upholstery
Country Charm B&B
Head of the Lakes B&B
Canoe FM
Medeba Summer Camp
Hammond Transportation
Know Your Home Inspections
Century 21 Leading Edge Realty Inc.
Nordic Inn
Haliburton Highlands Health Services Foundation
Minden Hills Rent-All
Lady Esther Esthetics Day Spa Breakfast
Rickie Woods, Potter
Michael Computer Solutions
Millennium Lifestyles Health & Fitness Centre
Van Houtte Inc.
Ski for All - a division of C.A.D.S.
Wind in the Willow Day Spa & Acupuncture Centre
Haliburton Optical
Garbutt Disposal Services 1482212 Ontario Ltd.
First Page SEO
Wild Orchid Thai Bistro
Rotary Club of Haliburton
Laidlaw Transit Ltd.
YWCA Haliburton Women's Resource Centre
The Highlands Communicator
Hudson Henderson Insurance Brokers
Heat-Line
Curves for Women / Haliburton
Lakeview Motel
Dr. Ed Smolen
Emmerson Lumber Ltd.
Chalet-in-the-Woods B&B
All-Season Cottage Rentals

Dancing Trees Cottage
Kitchens Etc.
Cottage Country Log Cabin Trading Company Ltd.
Senitt Puppets and Bags
Motel Minden
Autumn Marketing
Mint Contracting Services
pb&f communications
Bryson's Marine
The Haliburton Soap Factory Ltd.
Grass Roots Lawn Service
IainLauren Consulting
Haliburton Outdoor Equipment Ltd.
Rideau Docks Ltd.
Baywatch Cottage by Highland Building Systems
Earth and Fire Pottery
Whispers North Gallery & Gifts
Haliburton County Fair
Rebuild Canada - The Dream Garden Rock
Source
HP Super Store
Water's Edge Vacation Rentals Inc.
Haliburton Highlands Trails & Tours Network
Tall Pines Cottages
That Place in Carnarvon
Louie's Car Care & Detail Center
Head Inn Hairstyling
Carefree Cottaging
Cottages On The Web
Community Living Haliburton County
The Creative Cocoon
Gravity Coffee House
GeoHoliday at Haliburton Heights
Studio Rose
Redstone River Luge Club
Robert Van Nood Creative Inc.
Monarch Bible Camp - A CSSM Ministry
Minden Subaru
Firehouse Restaurant Lake Side Resort
Cottage Dreams
North Steel
Due North Apparel Inc.
Workforce Development Board
Sunrise Terrace B & B
Haliburton ATV Association
Driftwood Tackle
Performance North
The Cottage Angels
Ontario Early Years Centre
Haliburton Highlands Writers and Editor's Network



Haliburton Highlands CHAMBER *of* COMMERCE

John Fountain Electronics
Haliburton Veterinary Services
Highland Glass & Windows
Trillium Lakelands District School Board
Haliburton, Kawartha, Pine Ridge District Health Unit
Pioneer Snack Express Gas Bar
Brooklin Concrete a Division of Clearford Industries Inc.
McCauley Feed & Tack Store
Churko Electric
Atwater Cottage
A Little Bit of Everything
Private Cottage Rental - Century 21 Leading Edge Realty Inc.
Cyberx Business Centre
Silver Beach Camping & Trailer Park
Esson Lake Private Cottage Rental
Jadas Inc.
The Beach House
Heads up Hairstylists & Haliburton
Season's Hair Salon
Highlands Computer Services
JEWELS
D. W. Barry's Haulage
Cottage Connections
1st Class Flight Training
Laurie Scott, M.P.P.
The Quilter's Workshop
Ski-Mazing Watersports School
Wendy Wood - Artist
RBC Dominion Securities
Business Development Bank of Canada
Carving Solutions
Carey's Garden Centre
Minden Auto Care
Karen Levesque Enterprises
Roger Danilko Trucking & Logging Inc.
Clarica
Elite Cottage Home Service
Michael Easton Enterprises Limited
Mindful Hypnosis
Stoneware Pottery
Job Connect
Acorn's Furniture
Gonyea Eaves and Siding
Bonnie's Lavender Farm

Back County Tours Inc.
Chestnut Hill
Lia's Glass Dreams
True To You
Wintergreen Maple Products
Cordell Carpet
The Prichard House
Todd's Independent
The Storeroom Natural Foods
Campbell's Garden Centre and Flower
Mosquito Sentry
Mike's Bobcat Service
McKeck's Place
S.S. Roofing
Haliburton Mortgage
Perkins Antiques
Graham Guiding
Bevan Built
Northwood Inn (2005) Inc.
Kler Management Solutions
Baubles 'n' Bon Bons
My Size
Boomer Creative
The Legend Carpet and Duct Cleaning Centre
Gaia Centre
Telizon Inc.
Screaming Eagle Paintball
The Glengarrian Resort
Tile Vision
Akané Bed & Breakfast
Northern Expressions
Lads Self Storage
Canpages
Gordon A Monk Funeral Home Ltd.
Haliburton Highlands Family Health Team
Heritage House Cafe
St. George's Anglican Church
Land Worx
Haliburton Chiropractic
Crowne Gallery Ltd.
Maple Moon
Moon Shadows Estate Winery
Haliburton Crane & Concrete Pumping
We Check it Out Ltd.
Carmelita by the Lake
Design Flair

Chamber Update



The Panel on the Future of the Trent Severn Waterway



Since the creation of the Trent-Severn Waterway system a century ago, the lakes of Haliburton Sector have been used as reservoirs to allow for management of water levels in the System through a series of dams.

The TSW was originally an important artery, designed to allow the transportation of goods and people by joining lakes and rivers in Central Ontario. As time passed, the economic conditions and demographics of the area changed markedly. Today, the TSW is primarily a recreational route and the reservoir lakes - formerly barely inhabited - now provide permanent and seasonal homes to tens of thousands of people, support dozens of towns and local livelihoods of many thousands more, and support a diverse and relatively healthy ecology of fish and wildlife.



In recent years, seasonal water flow out of the reservoir lakes have created issues for both shoreline and non-shoreline residents. Water levels typically fluctuate between two and seven feet, depending on the lake. With the threat of climate change and competing economic interests, Parks Canada is seeking a way to better satisfy the many stakeholders in their management of the TSW system. Parks Canada has appointed a six member panel to meet with stakeholders and the public about the many complex issues, challenges and opportunities facing the system. This panel will meet in various locations throughout the summer and hold public forums. A wealth of information can be found at www.tswpanel.ca as well as dates and times of the meetings. We encourage all to come out and voice their concerns and opinions to these meeting.



The devastating effects of the ever inconsistent water levels is far reaching and have starting to hinder the economic growth of Haliburton County. With summer tourism declining, the possibility of not being able to use our lakes and water systems is a concern to all in Haliburton County.



Therefore, the Haliburton Highlands Chamber of Commerce would like to make a presentation to the TSW Panel coming to Minden on August 14th, 2007 representing all businesses and business concerns in Haliburton County.

We have compiled a list of questions that will help us better prepare a presentation to the Panel and would appreciate your input.

Just reply to this email, filling in your responses to the questions and I will then send out our final report based on the information received.

We want to thank you in advance for taking the time to help our local economy and environment.

1. How has the changing water levels affected your business? (Directly, indirectly or not at all)

2. Please explain.
 3. Have you noticed an increase or decrease in natural habitats and resources as a result of the water levels in Haliburton?
 4. Have you heard complaints? ((Many, some or not at all)
 5. Can you list a few of the complaints?
 6. Have you heard any positive comments in regards to water control in Haliburton County?
 7. Can you list a few of the comments?
 8. Do you have a personal story to share with us that would help better understand the affect of water levels on you as a resident in Haliburton County?
 9. Do you have a personal story to share with us that would help better understand the affect of water levels on you as a business owner in Haliburton County?
-

*Update brought to you by:
Charlene English
Administrative Coordinator
Haliburton Highlands Chamber of
Commerce
phone: (705)286-1760
fax: (705)286-6016
1-877-811-6111
charlene@hhchamber.on.ca*



Haliburton Highlands
CHAMBER *of* COMMERCE

Chamber Update



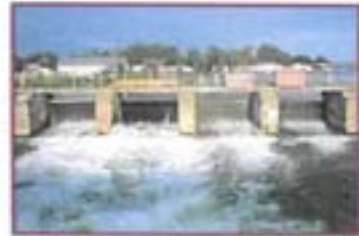
The Panel on the Future of the Trent Severn Waterway

Thank you to all that responded to our questions regarding the water levels in Haliburton County. We received some interesting answers. Based on this information we will be making a presentation to the Trent Severn Waterway Panel on Tuesday August 14th, at the Minden Community Centre. The meeting begins at 1pm and continues all day.

Please come and show your support.

TSW Presentation

Above you will find a link to open a pdf copy of our presentation. We would like to represent all of our members and they have been named in this document. If for some reason you do not want your business name listed, please let us know and we'll remove it from our presentation.



If you have any comments or questions, please do not hesitate to contact us.

Update brought to you by:
Charlene English
Administrative Coordinator
Haliburton Highlands Chamber of
Commerce
phone: (705) 286-1760
fax: (705) 286-6016
1-877-811-6111
charlene@hbchamber.on.ca



Haliburton Highlands
CHAMBER *of* COMMERCE