

Otonabee Region Conservation Authority

Presentation to The Panel on
The Future of the Trent-Severn Waterway
Marshlands Centre, Lakefield, Ontario
September 13, 2007



OTONABEE
CONSERVATION

Purpose of this Presentation

- 1) Advise Panel of mandate of ORCA
- 2) Address mutual concerns/interest:
 - flow management,
 - water quality,
 - development and planning regulations, and
 - Governance considerations
- 3) Support revitalization of the TSW through integrated water resources management.



OTONABEE
CONSERVATION

Conservation Authority Mandate

- “undertake programs to further the conservation, restoration, management and development of renewable natural resources”

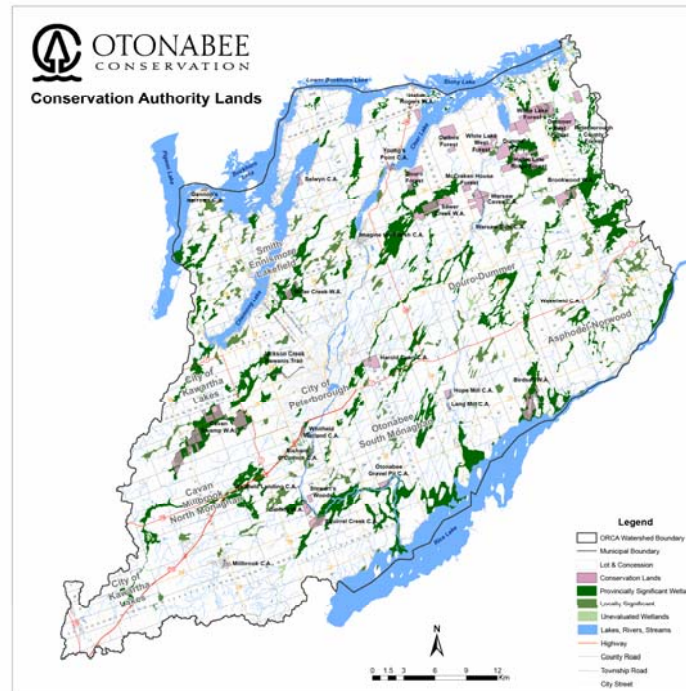
Conservation Authorities Act,

- R.S.O. 1990, Chapter C27
- Sections 20 and 21



OTONABEE
CONSERVATION

Conservation Authority Jurisdiction



Flow Management

- Management of Flows under different water conditions
 - Lead time is critical
 - Flow data only available from TSW



OTONABEE
CONSERVATION

Flow Management

- Water Control Infrastructure
 - Re-invest = efficient management of flows and accuracy of flow data
- Emergency Preparedness Planning



OTONABEE
CONSERVATION

Development Planning and Regulations

- Development Proposals
 - Distinction and common interests
- Cumulative Impacts
 - Inter-agency collaboration and dialogue



OTONABEE
CONSERVATION

Development Planning and Regulations

- Education and Information
 - “Working Around Water” workshops
 - Web-based information
 - Brochures
 - Maps



OTONABEE
CONSERVATION

Water – Our Most Precious Resource

- Drinking Water Source Protection
 - Intake Protection Zones
 - Waste water treatment



OTONABEE
CONSERVATION



Intake Protection Zone for City of Peterborough

Water – Our Most Precious Resource

- Water-based Recreation
 - Swimming, boating, other water-based sports
- Environmental/Economic/Cultural Values



OTONABEE
CONSERVATION

Governance Considerations

- Legislation and Regulations
- Financial Foundation
- Stakeholder Consultation and Collaboration
- Integrated Water Resources Management



OTONABEE
CONSERVATION

Integrated Water Resources Management

“The process of promoting the coordinated development and management of water, land and related resources, in order to maximize the resultant economic and social welfare in an equitable manner without compromising the sustainability of vital ecosystems.”

World Health Organization



OTONABEE
CONSERVATION

Revitalization of the Trent-Severn Waterway

- Identify Competing Interests
- Legislation, Regulations, Linkages
- Agencies Encompassed
- Strategic Directions
- Reduce Duplication of Effort
- Efficient Deployment of Resources



OTONABEE
CONSERVATION

Thank you.

Richard D. Hunter
Chief Administrative Officer
Otonabee Region Conservation Authority
705-745-5791, ext. 222
dhunter@otonabee.com



OTONABEE
CONSERVATION