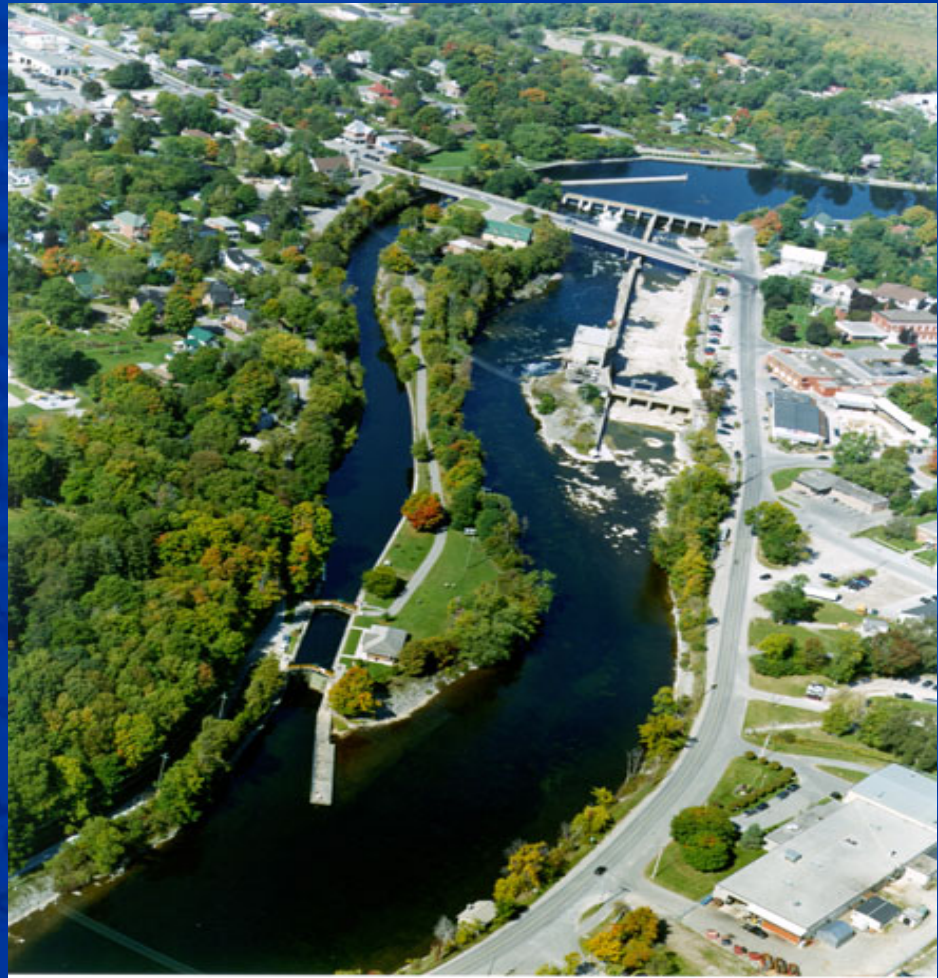


Presentation to TSW Panel

September 13,
2007

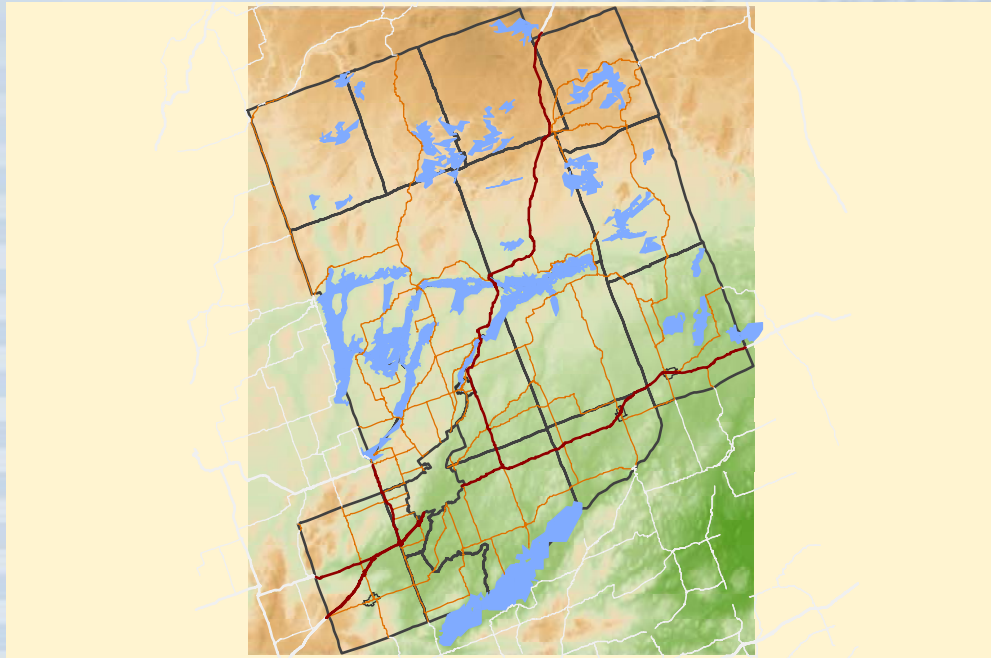
Lakefield



County of Peterborough



Quick Facts: County of Peterborough & TSW



- 12 of 44 locks in County (27%)
- 140 kms of the 386 kms in County (36%)
- Directly affects all 8 Townships



Water Quality

Issue: Declining water quality

**Recommendation 1:
Federal Government to provide funding for septic system re-inspection program along TSW**



Water Quality

Recommendation 2:
Launch a public awareness program aimed at reducing grey water disposal into the lake.



Water Quality, cont'd

Recommendation 3: Legislatively-based TSW goal/policy statement be drafted for development upland from waterway



Water Levels

Issue: Drastic fluctuations in water levels of feeder lakes resulting in negative environmental and financial impacts



Water Levels

Recommendation 1:

Consider a mechanism for notification to public of intent to change water levels

Recommendation 2:

Re-evaluation of water budget requirements, linkages of feeder lakes



Local Economic Spin-offs

Issue: Lack of awareness of related events



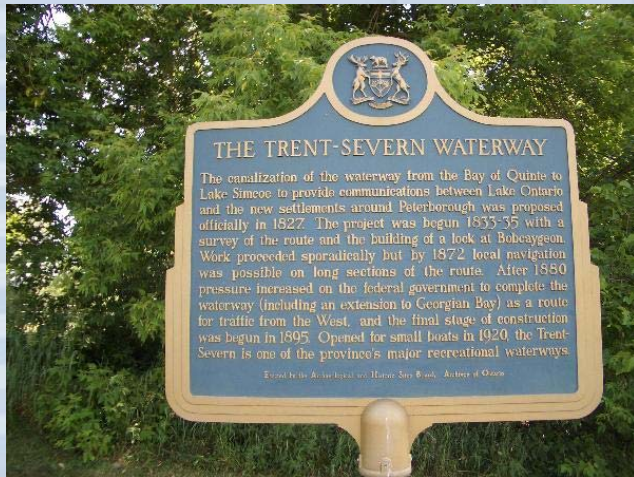
Recommendation:
TSW website
provide a link to
municipal or
community events



Activities for Non-boaters

Issue: Greater non-boater visitation

Recommendation: Add amenities that enhance the visitation experience



County of Peterborough



Deteriorating Infrastructure

Issue:

Difficult to address issues such as

- infrastructure problems and,
- impacts on waterway efficiency, costs and public safety.





Crumbling Canal Wall

County of Peterborough





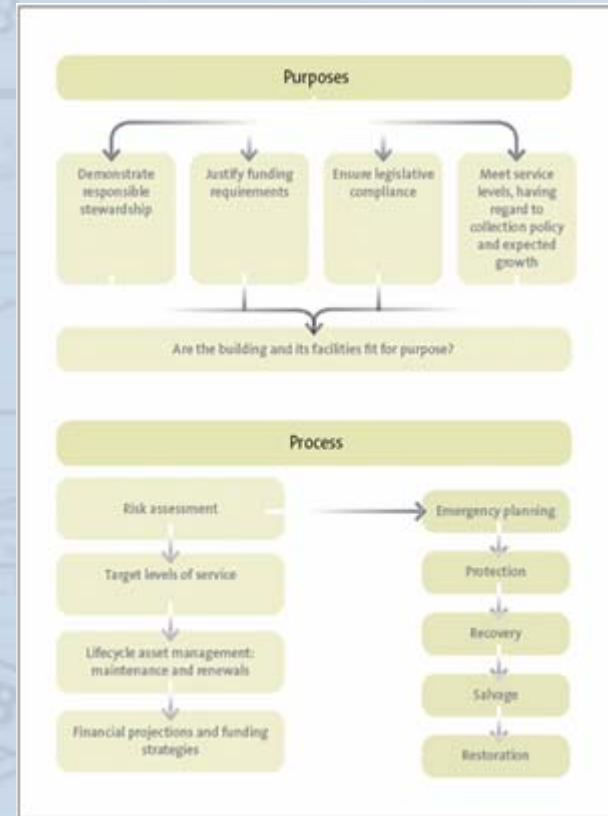
Hill Street Fence

County of Peterborough



Deteriorating Infrastructure

Recommendation:
TSW administration
to develop multi-
year Asset Manage-
ment Plan with \$
commitments



Other Revenue Sources

Issue: Not enough funds for operation

Recommendation: Revenue creation from hydro projects



Marketing

Issue: Apparent lack of extensive promotion

Recommendation:
Creation of a visitor experience program together with appealing broad marketing campaign



The Corporation of the County of Peterborough

470 Water Street
County Court House
Peterborough, ON K9H 3M3

(705) 743-0380

County of Peterborough

